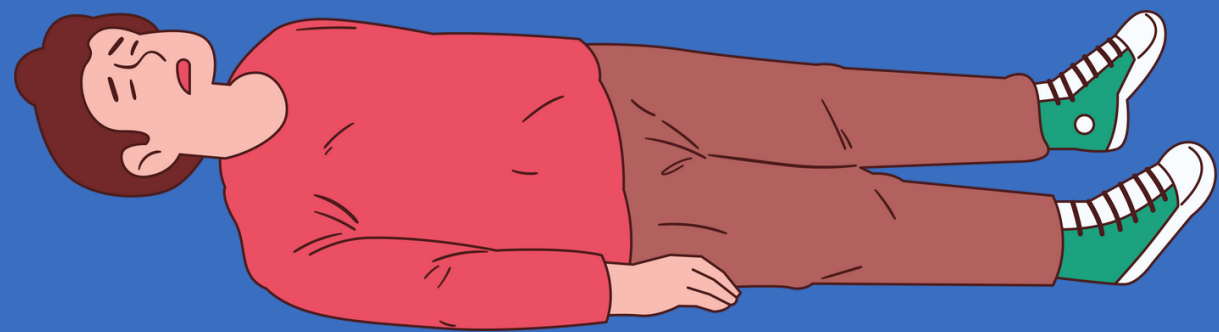


HOW TO GET A GOOD NIGHT'S SLEEP?

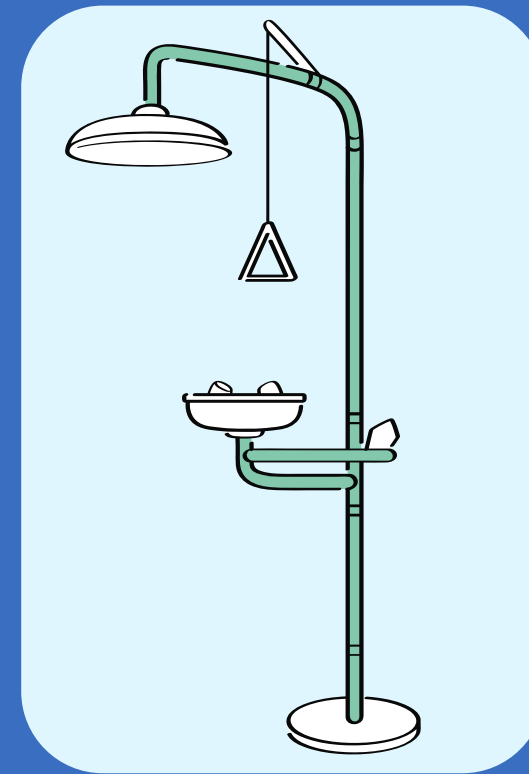


MAINTAIN YOUR SAFETY SHOWER!



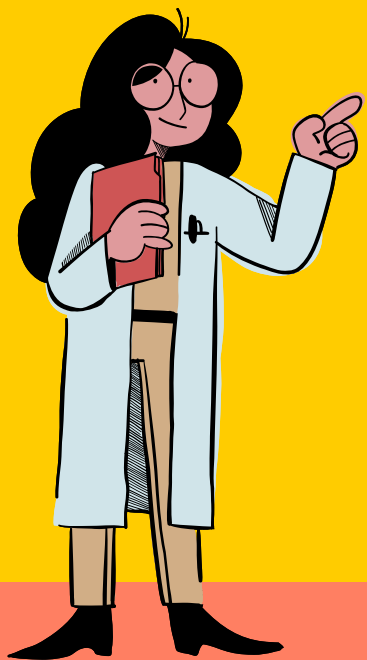
AND RISK A DIFFERENT KIND OF SLEEP!

OR DON'T...



✓ OUR PART

CHECK REGULARLY

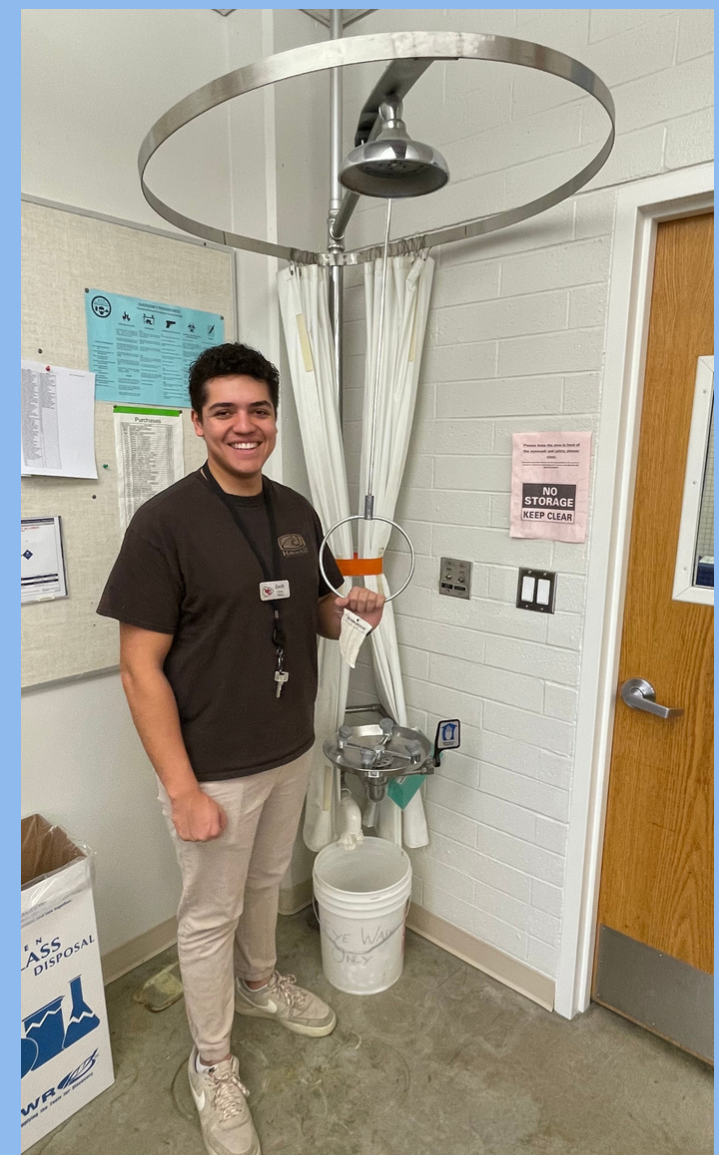
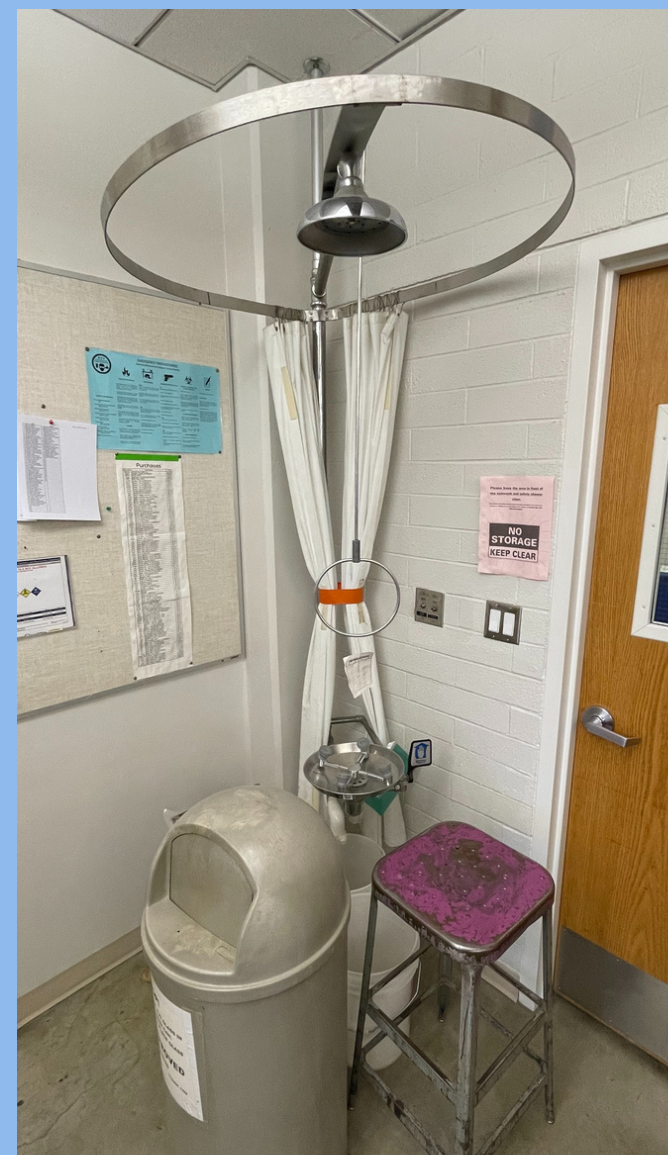


BYU Risk Management ensures that safety showers and eye wash stations in the Benson Building are checked frequently (once per week) to ensure proper function of the equipment. You might've already seen CCS employees stop by your lab to do the test!

✓ YOUR PART

KEEP THE SPACE CLEAR

"Where the eyes or body of any person may be exposed to injurious corrosive materials, suitable facilities for quick drenching or flushing of the eyes and body shall be provided within the work area for **IMMEDIATE** emergency use." (OSHA 1910.151(c), emphasis added)



SAFETY TESTIMONIALS

A post-doc researcher doing an experiment with unstable nitrogen compounds was the victim of a sudden explosion caused by the chemicals she was working with. Glass shards coated with residual chemicals flew and embedded in her skin.

Although she had to have 50 shards of glass removed from her skin, her immediate use of the safety shower following the accident prevented permanent injury of toxic chemical exposure.

Two workers in a biochemistry hospital lab were working with 50% sulfuric acid with quinol. As they added the last portion of the concentrated acid to their reaction flask, the bottom of the flask broke and covered one of the workers from the waste down with the 50% acid.

The worker sprinted to the safety shower and rinsed for the appropriate amount of time. Although the acid had dissolved his cotton lab coat and jeans, he only suffered temporary reddening of the skin and no permanent acid burns.

Using the Safety Shower

1. Shout for assistance to help get to the safety shower
2. Pull down the handle hanging above the eye-wash
3. Remove clothing (modesty curtain provided)
4. Rinse for the specified time written on the SDS of the chemical that caused the accident.
(Generally 15 minutes).

Using the Eye Wash

1. Shout for assistance to help get to the eye-wash station.
2. Push down the lever on the right side of the station.
3. Hold eye-lids open so water runs through them.
4. Rotate the eyes up, down, left, then right in order to wash the eyes thoroughly.
5. Rinse the eyes for the specified time written on the Safety Data Sheet of the chemical that has caused the accident
(Generally 15 minutes)

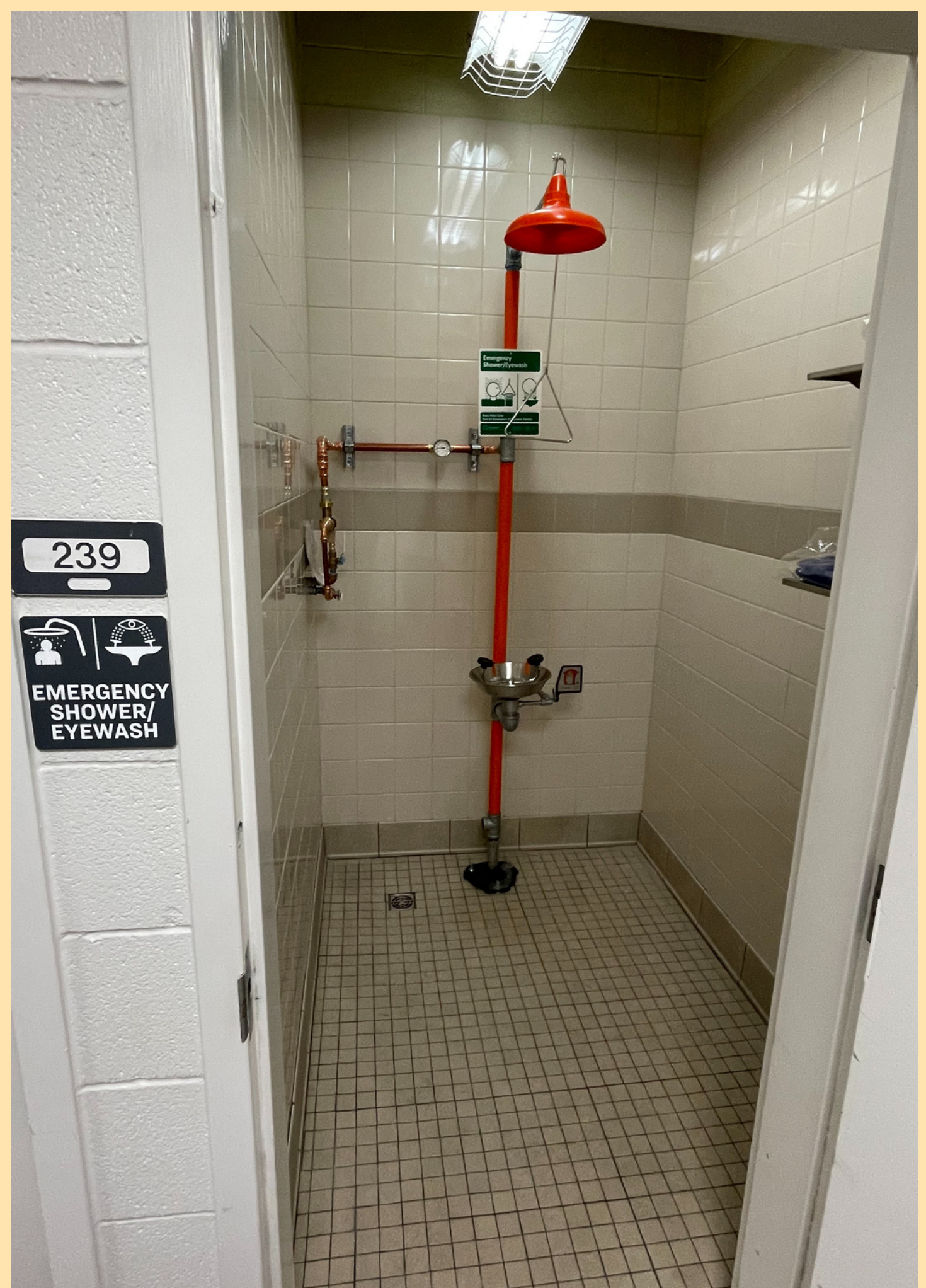
INTRODUCING...

THE WARM WATER SAFETY SHOWER!

In the event that a chemical spill requires an individual to use the safety shower, they must rinse in the closest safety shower to them at the time of the spill for at least 5 minutes.

After the first 5 minutes of rinsing, if desired, Risk Management has permitted the remaining rinse time to be completed in the warm water safety shower on the second floor of the Nichols Building.

LOCATED IN NICB 239



Questions?

Matthew Allen, 801-310-6725, BNSN C184B
matthew.allen@byu.edu